

PUMP INFORMATION

- Type: Sump Pump(s)
 Grinder Pump(s)
 Non-Clog Pump(s)

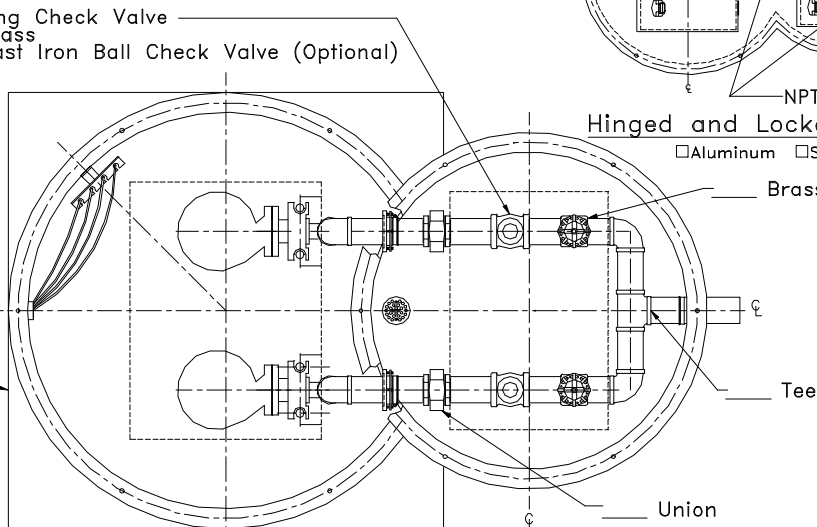
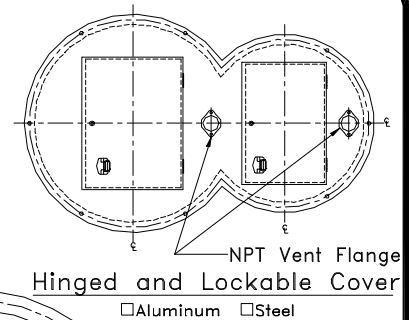
Model NO: _____
 Rating: _____ GPM _____ TDH
 Motor: _____ HP _____ RPM
 Elec: _____ PH _____ HZ _____ v
 Elec: _____ FL AMPS

DISCHARGE PIPE

- 3" 304 Stainless Steel
 3" Sch40 Galvanized Steel
 3" Sch80 PVC Pipe

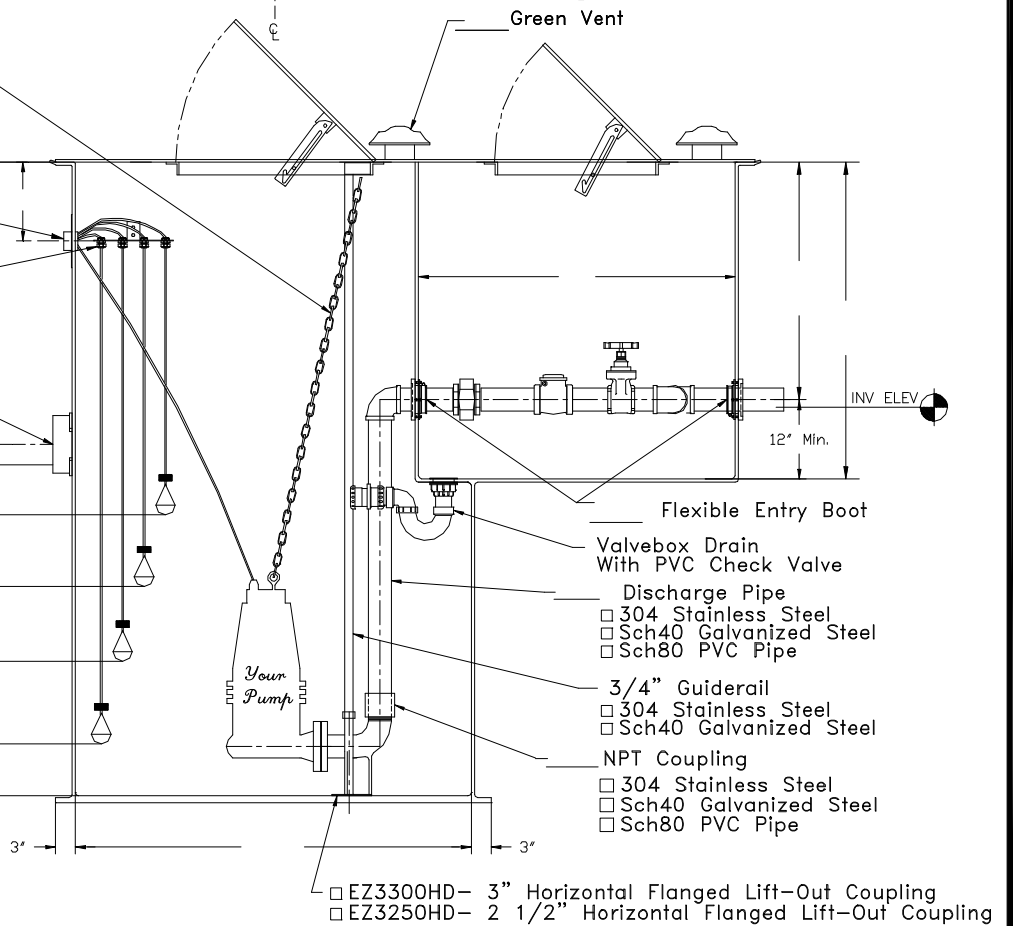
- Anti-Floatation Flange
 Fiberglass Encapsulated
 ASTM A-36 Square Steel
 Round Fiberglass
 None

- 3/16" Lifting Chain
 304 Stainless Steel
 Galvanized Steel
 * Stainless Steel Cable is Available



- ELEV
 NPT Electrical Coupling
 Enameled Steel
 Stainless Steel
 304 Stainless Steel Float Bracket w/ (4) Cord Grips
 Floats
 Cast Iron Inlet Hub (Different Sizes and Types Available)

- INV ELEV
 ELEV HIGH LEVEL ALARM
 ELEV PUMP #2 ON
 ELEV PUMP #1 ON
 ELEV PUMP OFF
 ELEV



EZ-Out Prefabricated Fiberglass Lift Station
 Duplex EZ3300HD-EZ3250HD With Cylindrical Valvebox
 Scale: None
 Drawn By: RM
 App'd By: _____
 Date: 04/21/03
 Highway 25 North P.O. Box 420 Rochester, IN 46975
 Phone: 800/354-4534 Fax: 574/223-8106
 Supersedes Prints Prior To: 05/09/03
 Reference No: 16800

Revisions

Ⓐ	First Released.

This print is and contains confidential proprietary information owned exclusively by TOPP INDUSTRIES, INC. It is furnished on a strictly confidential basis. This restriction includes, but is not limited to the condition that this print will not be used as a record or to identify or inspect parts or for other information purposes and will not be used to manufacture or procure the manufacture of the items shown in this print by any other source than TOPP INDUSTRIES, INC.